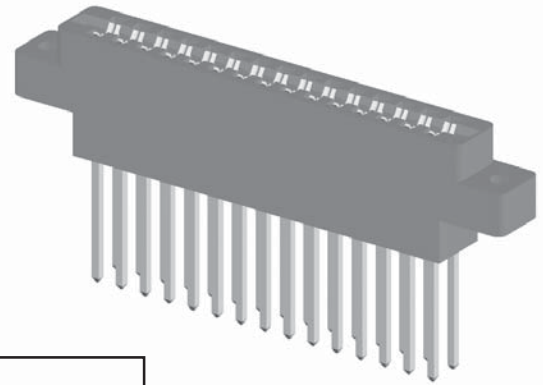




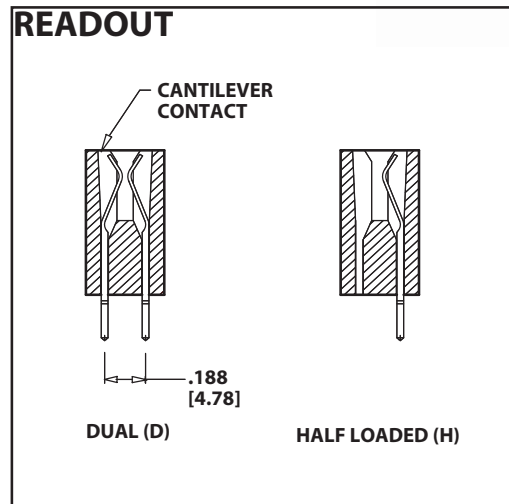
**.156" [3.96mm] Contact Centers, .720" Insulator Height  
.045" square / .031" x .062" Wire Wrap**

### SPECIFICATIONS

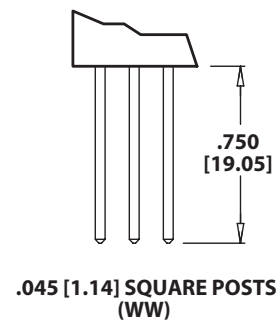
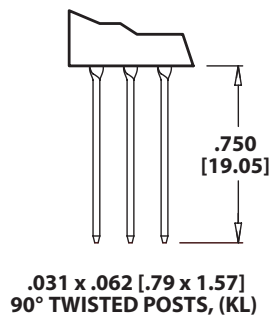
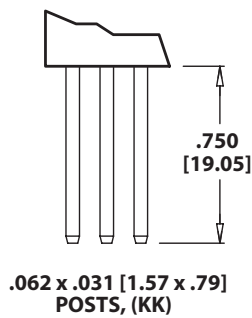
- Accommodates .062" ± .008" [1.57 ± .20] PC board
- PBT insulator
- Molded-in key available
- In Between Contact Key use PLC-K1, see page 126 (sold separately)
- 5 amp current rating per contact
- 30 milli ohm maximum at rated current



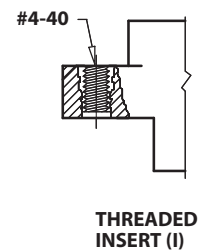
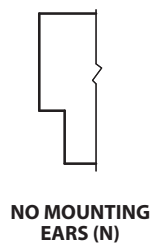
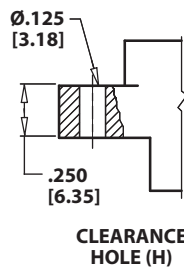
Sullins Edgecards



### TERMINATION TYPE



### MOUNTING STYLE





**.156" [3.96mm] Contact Centers, .720" Insulator Height  
.045" square / .031" x .062" Wire Wrap**

Sullins Edgecards

**PART NUMBER CODING**

**E B M 43 D KK H - Sxxx**

**MATERIALS (Insulator/Contact)**  
E = PBT/Phosphor Bronze (Standard)  
(Consult Factory For Other Materials)

**CONTACT FINISH - RoHS Compliant**  
All platings are Lead Free and have .000050" Nickel underplate

<b>Contact Surface</b>	<b>Termination</b>
B = .000010" Gold	.000100" Pure Tin, Matte
C = .000030" Gold	.000100" Pure Tin, Matte
G = .000010" Gold	.000005" Gold
Y = .000030" Gold	.000005" Gold
<b>Contact Surface</b>	<b>Overall Plating</b>
S = .000010" Gold	.000010" Gold
M = .000030" Gold	.000010" Gold
E = .000100" Pure Tin, Matte	.000100" Pure Tin, Matte

**CONTACT CENTERS**  
M = .156" [3.96mm]

**MODIFICATION CODE (Consult Factory)**  
OMIT FOR STANDARD

**MOUNTING STYLE (Opposite page)**  
H = Clearance Hole  
N = No Mounting  
I = Threaded Inserts

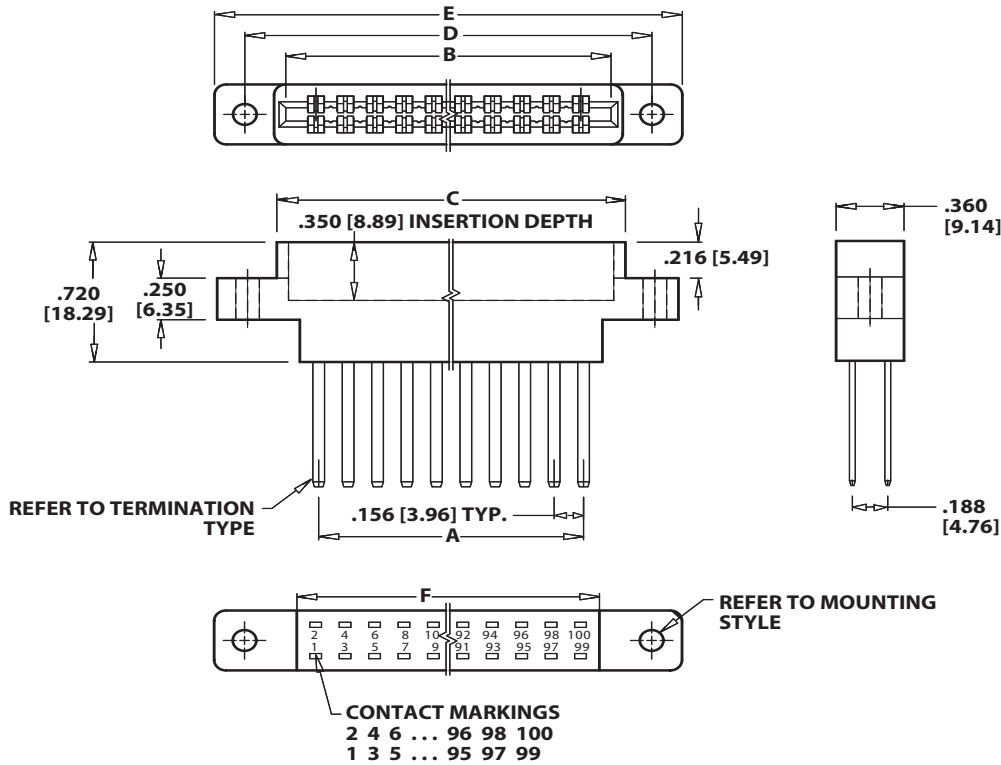
**TERMINATION TYPE (Opposite Page)**  
KK = .031" [.79mm] x .062" [1.58mm] Post  
KL = .031" [.79mm] x .062" [1.58mm] Post, Twisted 90°  
WW = .045" [1.14mm] Square Post

**READOUT (Opposite Page)**  
D = Dual Row  
H = Half Loaded

**NUMBER OF CONTACT POSITIONS**  
See Chart Below

**DIMENSIONS**

Dimensions in [ ] are in millimeters, all others are in inches.



POSITIONS/ CONTACTS	INCHES						[MILLIMETERS]					
	A±.008	B±.008	C±.015	D±.010	E±.020	F±.015	A±0.20	B±0.20	C±0.38	D±0.25	E±0.51	F±0.38
06/12*	0.780	1.100	1.224	1.534	1.784	0.980	19.81	27.94	31.09	38.96	45.31	24.89
10/20	1.404	1.724	1.848	2.158	2.408	1.604	35.66	43.79	46.94	54.81	61.16	40.74
12/24	1.716	2.036	2.160	2.470	2.720	1.916	43.59	51.71	54.86	62.74	69.09	48.67
15/30	2.184	2.504	2.628	2.938	3.188	2.384	55.47	63.60	66.75	74.63	80.98	60.55
18/36	2.652	2.972	3.096	3.406	3.656	2.852	67.36	75.49	78.64	86.51	92.86	72.44
22/44	3.276	3.596	3.720	4.030	4.280	3.476	83.21	91.34	94.49	102.36	108.71	88.29
25/50*	3.744	4.064	4.188	4.498	4.748	3.944	95.10	103.23	106.38	114.25	120.60	100.18
28/56	4.212	4.532	4.656	4.966	5.216	4.412	106.98	115.11	118.26	126.14	132.49	112.06
30/60*	4.524	4.844	4.968	5.278	5.528	4.724	114.91	123.04	126.19	134.06	140.41	119.99
31/62*	4.680	5.000	5.124	5.434	5.684	4.880	118.87	127.00	130.15	138.02	144.37	123.95
36/72	5.460	5.780	5.904	6.214	6.464	5.660	138.68	146.81	149.96	157.84	164.19	143.76
43/86*	6.552	6.872	6.996	7.306	7.556	6.752	166.42	174.55	177.70	185.57	191.92	171.50
50/100*	7.644	7.964	8.088	8.398	8.648	7.844	194.16	202.29	205.44	213.31	219.66	199.24

\* Consult Factory for availability.